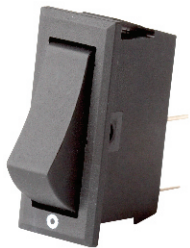
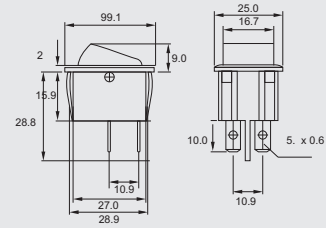




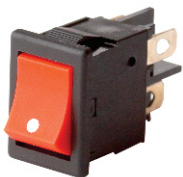
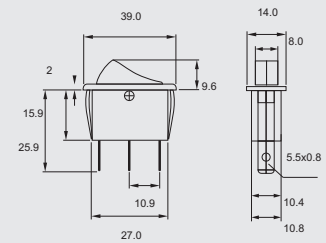
### M1 series

Function	Double Pole - W1, W2, W3, X1, X2, Z1, Z2, Z3, I
Rating	16 / 10 / 6A, 250V AC
Type	A / B
Cut out size	22 mm x 30 mm



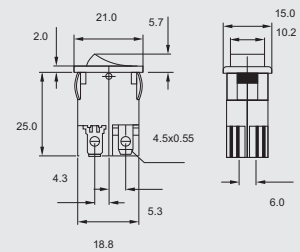
### M2 series

Function	Single Pole - W1, W2, W3, X1, X2, Z1, Z2, Z3, I
Rating	16 / 10 / 6A, 250V AC
Type	A / B
Cut out size	11 mm x 30 mm



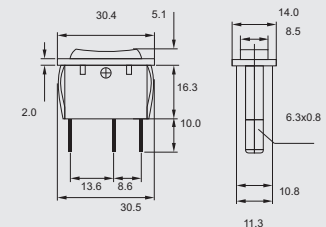
### M3 series

Function	Double Pole - W1
Rating	4A, 250V AC
Type	A / B
Cut out size	12.9 mm x 19.2 mm



### M4 series

Function	Single Pole - W2, W3, X2, Z1, Z2, Z3
Rating	10, 250V AC
Type	B
Cut out size	11.5 mm x 28.2 mm



# MINIATURE SWITCHES

## Technical Information

### Material

Body	Polyamide (Nylon 66)
Rocker	Polyamide / Poly Carbonate
Current carrying parts	Copper / Cu alloy silver plated
Contact parts	Silver alloy / Bimetal

### Colour Code for Switch

Colour	Body	Cap IL	Cap NIL
Black	1	-	1
White	2	-	2
Gray	3	-	3
Red	-	1	4
Green	-	2	5
Amber	-	3	-
Blue	-	4	6

### Current Coding

Code	Current
E	2 Amp
F	4 Amp
G	6 Amp
H	10 Amp
I	16 Amp

### Properties

Contact Resistance	< 10m ohm
Insulation Resistance	> 20M ohm
Dielectric strength	> 3KV
Inrush Current	75A
Circuit Isolation	> 3mm
Electric life operation	> 10K
Mechanical life operation	> 30K
Operating Temp. Range	-10°C to 85°C












### Type

Illuminated	A
Non Illuminated	B
Dot Illuminated	C

### Function

Code	Function	
W1	On-Off	Single Throw
W2	(On)-Off	Single Throw-Spring Return on 'on' Position
W3	On-(Off)	Single Throw-Spring Return on 'off' Position
X1	On-On	Double throw
X2	On-(On)	Double Throw-Spring Return in one Position
Z1	On-Off-On	Double Throw-Center Off
Z2	(On)-Off-On	Double Throw-Center off with spring Return in one Position
Z3	(On)-Off-(On)	Double Throw-Center off with Spring Return in Both Position
I	Indicator	

### Printing

### Ordering Systems

M Series	Current	Type	Function	Colour Body / Cap	Printing
----------	---------	------	----------	-------------------	----------

Example : M1IAW11102    DETAIL:-1)M1 - SERIES 2) I= 16Amp Current 3) A-ILLUMINATED TYPE 4) W1 - ON - OFF FUNCTION  
5)1 - BLACK BODY COLOUR 6)1 - RED ILLUMINATED CAP COLOUR 7)02 - PRINTING TYPE